

PRO QUIP JERRY CANS

TESTED TOUGH TO AUSTRALIAN CONDITIONS
COMPLIES WITH AUSTRALIAN STANDARD AS2906:2001

Patented Safety Locking Pin



- ✓ Tested Safe, Tough, Durable and Corrosion Resistant
- ✓ Meets Defence Forces Specifications
- ✓ Passes all Drop Tests and will not leak under pressure
- ✓ No Loss of Integrity under Standards Flame Tests
- ✓ Fits Standard RV Racks
- ✓ Available in 5, 10 and 20 Litre Sizes
- ✓ Made in Latvia

PATENTED LOCKING PIN

AUSTRALIA #675806

CHINA #93118471.1

GERMANY #P4395052.

HUNGARY #219-155

LITHUANIA #3633

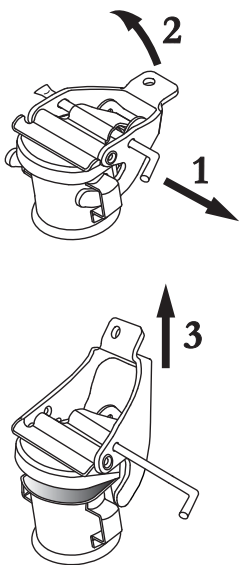
POLAND #P303352

CZECH REPUBLIC #PV950-95 LATVIA #11453



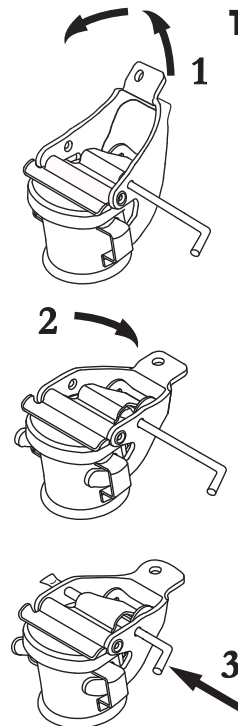
TO PREVENT DAMAGING YOUR METAL JERRY CAN CLOSURE, AND THEREBY VOIDING YOUR WARRANTY, PLEASE FOLLOW THESE INSTRUCTIONS CAREFULLY

TO OPEN LID CORRECTLY



- 1 Twist and Pull Locking Pin out of lid using ring. Pin will stop before it comes fully out.
- 2 Lift lever on lid until it flips all the way back.
- 3 Using lever, lift lid up to open.

TO CLOSE LID CORRECTLY



- 1 Using lever, lift lid up and forward to rest seal in place.
- 2 Push lever back and down all the way until arms have slid through side bars.
- 3 Twist and Push Locking Pin into guide on lid until it comes out the other side.

PROQUIP
VALUE ADDED PRODUCTS

Pro Quip International

14 London Dve Bayswater VIC 3153 Australia

Tel: (03) 9761 1110 Email: sales@proquip.com.au

www.proquip.com.au